

Transmission Sensors:

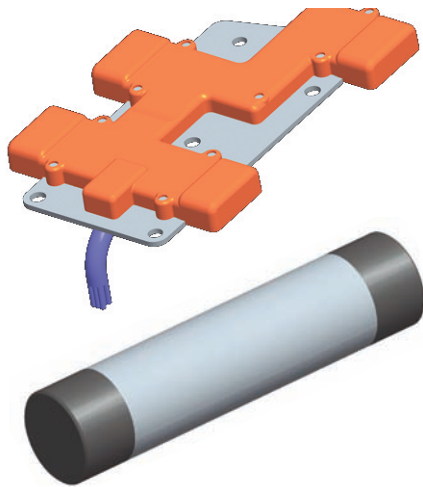
- ✓ Solid State Hall Effect Designs
- ✓ No Moving Parts
- ✓ Low Pressure Overmold Sealed Construction
- ✓ Direction and Speed Detection
- ✓ 360° Rotary Hall Eliminates need for Mechanical Gear Selection
- ✓ Wide Operating Temperature Range: -40°C to +150°C



Range Sensor



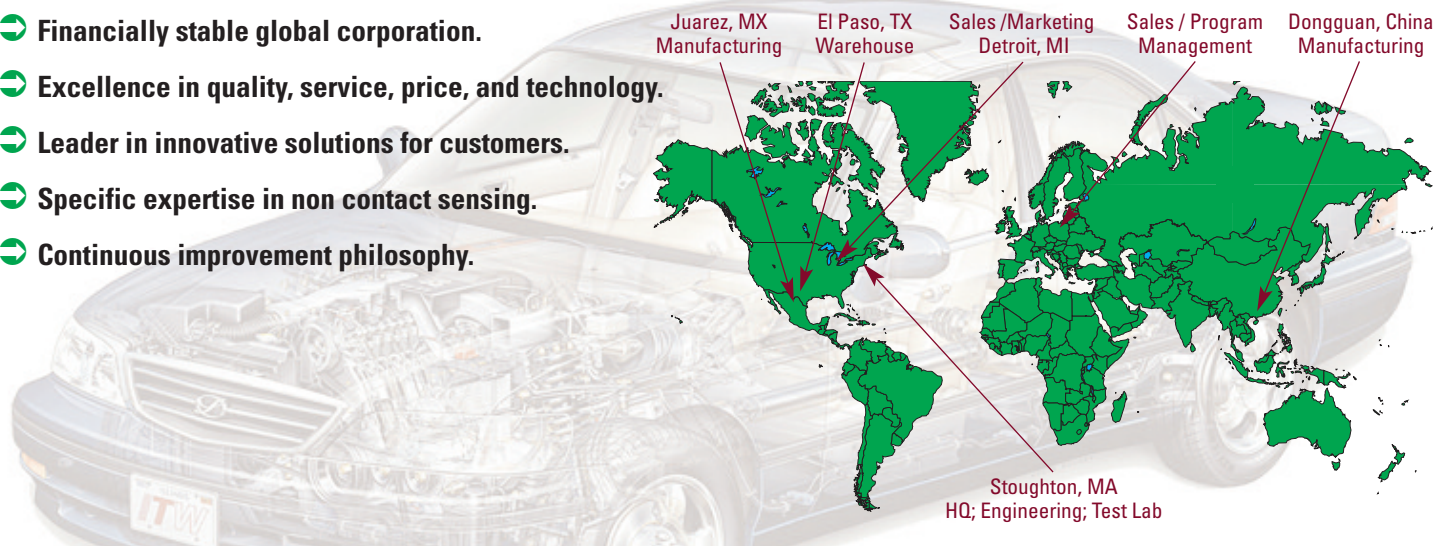
Speed Sensor



- ✓ Designed for internal or external transmission mounting
- ✓ Provides an analog or digital PWM output signal
- ✓ Uses software to calibrate transmission selector positions for reuse on multiple applications.
- ✓ Immune to external electromagnetic field interference
- ✓ Integrated sealing provides a robust sealed design to meet high reliability and reduced overall cost
- ✓ Transient protection protects against electro-magnetic fields and power spikes
- ✓ Custom mounting to optimize gear and sensor locations.
- ✓ Operates over wide air gap without affecting timing accuracy
- ✓ Provides accurate gear edge detection and peak detection compensates for tilt or off-axis failure mode

WHY ITW ARK-LES?

- ➔ Financially stable global corporation.
- ➔ Excellence in quality, service, price, and technology.
- ➔ Leader in innovative solutions for customers.
- ➔ Specific expertise in non contact sensing.
- ➔ Continuous improvement philosophy.



781.297.6000

www.ark-les-transportation.com

Design and specifications subject to change without notice due to continuing product improvements

TW Ark-Les
TRANSPORTATION An ITW Switches Business
NON-CONTACT SENSING SOLUTIONS

For more information email us: info@ark-les-transportation.com or contact **Martin Foxworthy**, Sales Manager 248-514-8457